

AXIS Camera Station

Flexible surveillance software for your Axis network video products

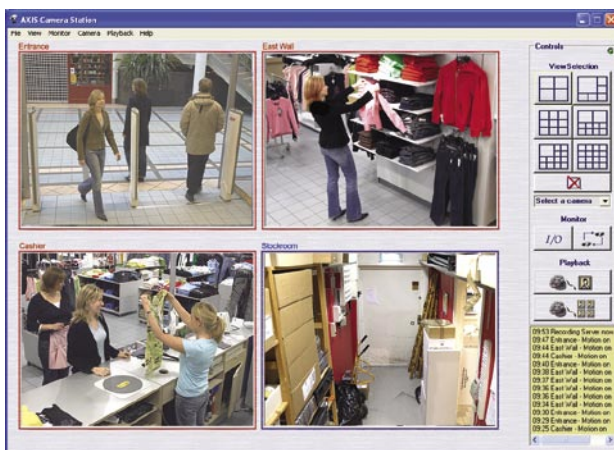
With the AXIS Camera Station installed on your Windows PC, you can monitor your cameras, and at the same time, record high quality, digital video either continuously or on schedule, alarm and/or motion detection. Application and camera based motion detection and intelligent, differentiated day and night settings optimize trigger levels. This reduces false alarms and improves sensitivity for event detection. Recorded incidents can easily be found for immediate action and multi-view playback displays the incident timeframe.

Prevent shoplifting, secure your car park or schoolyard and monitor the back door – just a few examples that can make your investment pay off quickly.

AXIS Camera Station is specially designed to be used with Axis video products and delivers superior results on a Windows PC. It offers stable operations and scalability with easy addition of camera licenses, and includes a free Web interface and Windows client for remote control.



- View and record live video from multiple cameras at a remote location
- Record continuously, on alarm or on motion detection
- High-quality recordings
- No recording limitation in software
- Full duplex audio communication
- Multilingual user interface



Product Features

Viewing

- Live view of up to 16 cameras simultaneously
- MPEG-2/4 viewing
- Web client for remote viewing
- AXIS Camera Station Client (for Windows) included for remote viewing, playback and administration
- Control of PTZ camera's preset positions
- Multiple camera sequence (patrolling)
- Full duplex real time audio support without recording

Recording

- Limit recordings to images on motion or alarm
- Scheduled recording, on time and/or events
- Unlimited recording database, only limited by hardware
- Recording duration can be limited per camera to fit local legal requirements
- Warnings on deleted or altered images in recorded events

Event handling

- Advanced motion detection with exclude filter for image areas of no interest
- Camera-based motion detection to save on bandwidth
- "No motion" detection
- Event functionality with alarm notification via e-mail
- All system messages on-screen, in log files and optionally via e-mail

Supported languages

- English, French, German, Italian, Spanish

Optional components

- AXIS Image Enhancer for improved image quality in fog, smoke, rain and snow.

Playback

- Playback of recordings at controllable speed and play direction
- Multi-view playback

- Export single jpeg images and video sequences in avi format
- Search for motion in continuous recordings
- Find recorded events by date, time or motion

Licenses

- AXIS Camera Station license for 4 or 10 cameras/channels to be used on one single dedicated PC/server. Additional licenses in +1 or +5 up to 25 cameras.

Other

- Advanced input/output control
- User access control per camera with local or Windows domain accounts

Operating System Requirements

- Windows XP Professional SP2, 2000 (SP4), 2003 Server
- Internet Explorer 6.0, or higher
- TCP/IP support
- Internet Information Server (IIS) - for Web client
- MS .NET runtime environment

Axis Camera & Video Server Support

Network Cameras

- AXIS 205, AXIS 206, AXIS 206M, AXIS 206W, AXIS 210, AXIS 211, AXIS 211A, AXIS 213, AXIS 221, AXIS 231, AXIS 232, AXIS 2100, AXIS 2110, AXIS 2120, AXIS 2130 and AXIS 2420

Video servers

- AXIS 240Q, AXIS 241Q, AXIS 241QA/SA, AXIS 241S, AXIS 2400, AXIS 2400+, AXIS 2400+ Blade, AXIS 2401, AXIS 2401+, AXIS 2401+ Blade and AXIS 2411

Audio module

- AXIS 2191

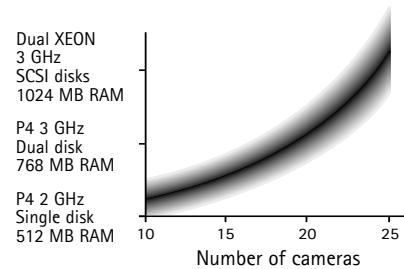
Minimum Hardware Requirements

- Pentium 4, 2 GHz processor
- 512 MB RAM
- Hard disk: 1 GB for installation and 2 GB or higher per camera as image database

- NTFS file system
- CD-drive
- XGA (1024 x 768) or higher resolution monitor
- Graphic card with 32MB or more memory
- Microsoft mouse or compatible pointing device
- 100 Mbit Ethernet

Recommended

- Pentium 4, 3GHz processor
- 512 MB RAM
- Dual hard disks



AXIS Image Enhancer



AXIS Image Enhancer is an optional component that improves image quality of live and recorded video in fog, smoke rain and snow.

